

Conical connection impression techniques – implant level



Quick guide

The steps outlined in this guide are for use with the following implants: NobelActive®, NobelReplace® Conical Connection, NobelReplace® Conical Connection PMC, and NobelParallel™ Conical Connection.

This guide does not replace the Instructions For Use (IFU). Please review the instructions for use at ifu.nobelbiocare.com

Indications

- After a one-stage procedure when indexing of the implant position is desired at the time of implant placement.
- After a two-stage procedure when a healing abutment or temporary restoration has been in place and the soft tissue has healed.

Closed tray instructions

Step 1

- Remove the Healing Abutment Conical Connection using Screwdriver Unigrip and by rotating it counterclockwise.

Step 2

- Insert the closed tray impression coping into the implant. The impression coping is designed so that the guide pin threads will not engage the implant thread unless the impression coping is seated correctly. Ensure that it is fully engaged into the internal connection and does not rotate.
- Use the Screwdriver Unigrip and hand tighten the screw.

Step 3

- To verify proper seating of the impression coping, ensure that the radiographic seating groove on the impression coping is level to the implant shoulder. Use a perpendicular radiograph to confirm. See example to the right, image 3.

Step 4

- Block out the Unigrip driver indentation on the impression coping.

Step 5

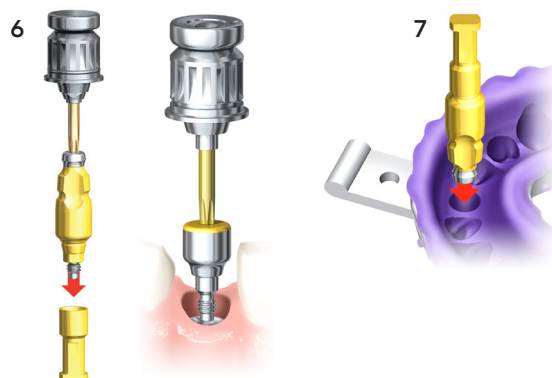
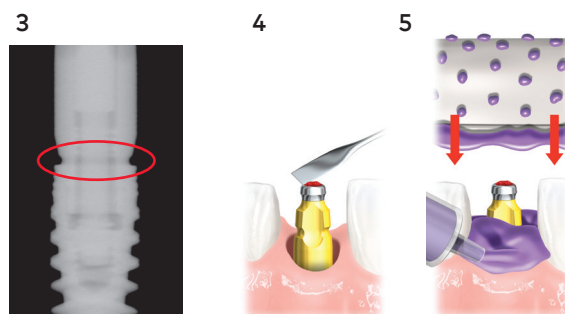
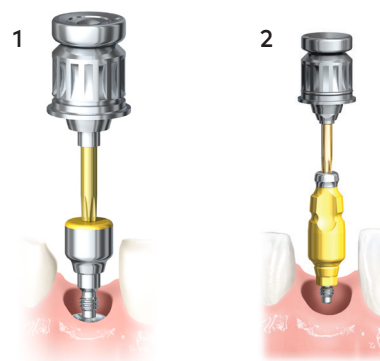
- Inject a heavy body impression material (polyether material or polyvinylsiloxane) around the impression coping and into the tray.
- Record the impression.

Step 6

- Remove the block-out material from the Unigrip driver indentation on the impression coping.
- Remove the impression coping and replace the healing abutment. For model fabrication, you or your dental laboratory should provide corresponding implant replicas.
- Attach the impression coping onto the corresponding implant replica and ensure accurate seating.

Step 7

- Place the impression coping implant replica assembly into its corresponding location in the impression and send to the dental laboratory for model fabrication.



Open tray instructions

Step 1

- Remove the Healing Abutment Conical Connection using Screwdriver Unigrip and by rotating it counterclockwise.

Step 2

- Insert the open tray impression coping into the implant.
The impression coping is designed so that the guide pin threads will not engage the implant thread unless the impression coping is seated correctly. Ensure that it is fully engaged into the internal connection and does not rotate.
- Tighten the guide pin using the Screwdriver Unigrip.
- Verify proper seating of the impression coping.
(See Step 3 on page 1).

Step 3

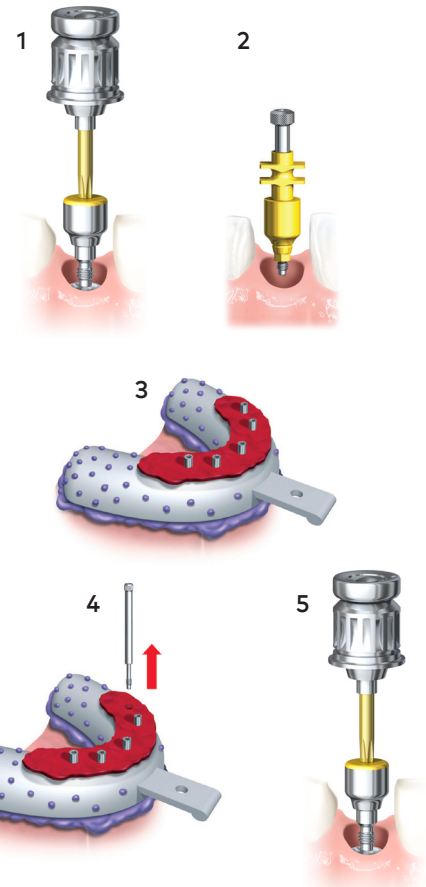
- Relieve and perforate the impression tray to allow full seating of the tray and protrusion of the guide pins. If there is a large opening, it may be closed off using baseplate wax, with the guide pins indenting or perforating the wax.
- Inject impression material around each impression coping.
- Fill the tray with impression material and seat the impression tray fully so that the tips of all the guide pins are identified.

Step 4



- After the impression material has set, unscrew the guide pins.
- Remove the impression tray and send to the dental laboratory, including the guide pins. For model fabrication, corresponding implant replicas should be provided by you or your dental laboratory.




Step 5

- Replace the healing abutment.



Materials for use with the conical connection closed or open tray impression technique

Description	Item number
 Screwdrivers	
Screwdriver Manual Unigrip 20 mm	29148
Screwdriver Manual Unigrip 28 mm	29149
Screwdriver Manual Unigrip 36 mm	29150
 Impression Copings Closed Tray Conical Connection	
Impression Coping Closed Tray CC 3.0 Ø 3.3 × 13 mm	36801
Impression Coping Closed Tray CC 3.0 Ø 3.8 × 13 mm	36803
Impression Coping Closed Tray CC NP Ø 3.6 × 13 mm	36538
Impression Coping Closed Tray CC NP Ø 5 × 13 mm	36539
Impression Coping Closed Tray CC RP Ø 3.6 × 9 mm	36541
Impression Coping Closed Tray CC RP Ø 3.6 × 13 mm	36540
Impression Coping Closed Tray CC RP Ø 5 × 9 mm	36543
Impression Coping Closed Tray CC RP Ø 5 × 13 mm	36542
Impression Coping Closed Tray CC RP Ø 6 × 9 mm	36545
Impression Coping Closed Tray CC RP Ø 6 × 13 mm	36544
Impression Coping Closed Tray CC WP Ø 5 × 9 mm	37851
Impression Coping Closed Tray CC WP Ø 5 × 13 mm	37850
Impression Coping Closed Tray CC WP Ø 6.5 × 9 mm	37853
Impression Coping Closed Tray CC WP Ø 6.5 × 13 mm	37852

Description	Item number
 Impression Copings Open Tray Conical Connection	
Impression Coping Open Tray CC 3.0 Ø 3.2 × 14 mm	36800
Impression Coping Open Tray CC 3.0 Ø 3.8 × 14 mm	36802
Impression Coping Open Tray CC NP Ø 3.6 × 10 mm	36258
Impression Coping Open Tray CC NP Ø 3.6 × 14 mm	36260
Impression Coping Open Tray CC NP Ø 5 × 10 mm	36259
Impression Coping Open Tray CC NP Ø 5 × 14 mm	36261
Impression Coping Open Tray CC RP Ø 3.6 × 10 mm	36263
Impression Coping Open Tray CC RP Ø 3.6 × 14 mm	36262
Impression Coping Open Tray CC RP Ø 5 × 10 mm	36265
Impression Coping Open Tray CC RP Ø 5 × 14 mm	36264
Impression Coping Open Tray CC RP Ø 6 × 10 mm	36267
Impression Coping Open Tray CC RP Ø 6 × 14 mm	36266
Impression Coping Open Tray CC WP Ø 5 × 10 mm	37855
Impression Coping Open Tray CC WP Ø 5 × 14 mm	37854
Impression Coping Open Tray CC WP Ø 6.5 × 10 mm	37857
Impression Coping Open Tray CC WP Ø 6.5 × 14 mm	37856
 Impression Copings Open Tray Conical Connection Bridge	
Impression Coping Open Tray CC Bridge NP	36930
Impression Coping Open Tray CC Bridge RP	36931
Impression Coping Open Tray CC Bridge WP	37858
 Implant Replicas Conical Connection	
Implant Replica Conical Connection 3.0	36791
Implant Replica Conical Connection NP	36697
Implant Replica Conical Connection RP	36698
Implant Replica Conical Connection WP	37879

nobelbiocare.com/en-us

